

Explore Sri Lanka - 2

9 Days & 8 Nights

(Customizable)

Cities:

- **Negombo (1N)**
- **Dambulla (2N)**
- **Kandy (1N)**
- **Nuwara - Eliya (1N)**
- **Ella (1N)**
- **Yala (1N)**
- **Galle (1N)**

€ 1472



Highlights

- Visit Sigiriya & Dambulla.
- Visit Temple of Tooth Relic in Kandy.
- Visit the aromatic tea gardens and the majestic Ramboda Waterfalls.
- Visit Little England – Nuwara-Eliya.
- Train tour from Nuwara Eliya to Ella.
- Visit Little Adams peak and Nine Arch bridge at Ella.
- Wild life experience at Yala, National park.
- Visit Galle Fort, a UNESCO world heritage site.
- Leisure at Unawatuna Beach and Colombo sightseeing.

Explore Sri Lanka - 2

- Want to explore a new tropical destination on your next vacation?
- With a contrast of exotic beaches on the island and spiritual Buddhist culture at the same time,
- This summer, take your family, kids & friends to this wonderful destination with our customizable **8 nights and 9 days Sri Lanka tour package**.



Tour Itinerary:

DAY 1 - 11/08/2023 (Friday)

Airport (CMB) - Negombo

- You are greeted by NaproHolidays (Pvt) Ltd at the airport
- Proceed to Negombo for relaxation after your flight.
- Overnight stay at hotel – Negombo.

DAY 2 - 12/08/2023 (Saturday)

Negombo – Dambulla

- After the breakfast, checkout & proceed to Dambulla.
- visit Dambulla Cave temple.
- Check-in to the hotel at Dambulla.
- Experience the trilling wild life at Habarana – Jeep Safari.
- Overnight stay at the hotel – Dambulla.

DAY 3 - 13/08/2023 (Sunday)

Dambulla

- After the breakfast climb Sigiriya rock fortress.
- Village tour at Sigiriya.
- Overnight stay at the hotel – Dambulla.



DAY 4 - 14/08/2023 (Monday)

Dambulla - Kandy

- After the breakfast proceed to Kandy – the hill capital of Sri Lanka.
- En – route visit spice garden in Matale.
- Visit Kandy Tooth Temple.
- City tour at Kandy and see Kandian Dance and Cultural Show at the night.
- Overnight stay at hotel – Kandy.

(Make sure to wear clothing that covers your legs and shoulders while visiting temples in Sri Lanka. Carry a sarong or a scarf for the same if needed.)



DAY 5 - 15/08/2023 (Tuesday)

Kandy – Nuwara Eliya

- After the breakfast, check out from the hotel and transfer to Nuwara Eliya.
- En - route visit Botanical Garden – Peradeniya.
- Visit Tea Factory, taste exquisite Ceylon Tea and enjoy the greenery of tea carpeted hills.
- See Grand Ramboda waterfalls.
- Visit Nuwara Eliya Town and Gregory Lake.
- Overnight stay at hotel – Nuwara-Eliya



DAY 6 - 16/08/2023 (Wednesday)

Nuwara Eliya - Ella

- After breakfast train tour to Ella, enjoy the scenic beauty of hill country.
- Visit Little Adam's Peak in Ella and walk up, surrounded by tea plantations, to enjoy the view.
- Visit Nine Arch bridge.
- Continue to beautiful Rawana waterfalls.
- Overnight stay at hotel – Ella.



DAY 7 - 17/08/2023 (Thursday)

Ella - Yala

- Transfer to Yala via the pictures route.
- Evening, visit Yala National Park for exciting wildlife safari by Jeep.

See Elephants, Crocodiles, Peacocks, Monkeys, Sloth Bears, Buffalos, Deer and the rare Leopards.

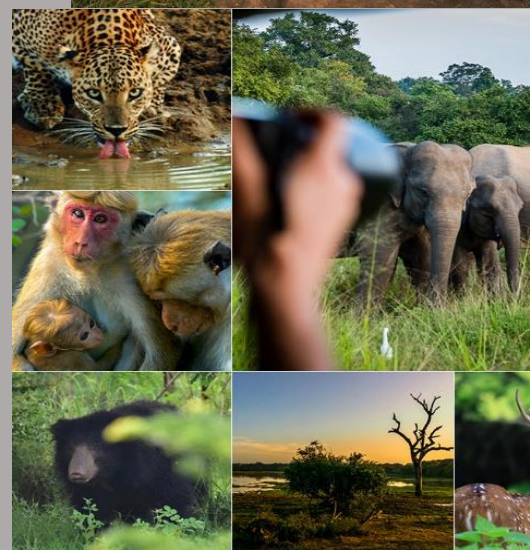
- Overnight stay at hotel – Yala.



DAY 8 - 18/08/2023 (Friday)

Yala - Galle

- Proceed to Galle.
- En – route visit Galle Fort, a UNESCO world heritage site, and stroll around inside the old Dutch Fort.
- Overnight stay at hotel – Unawatuna.



DAY 9 - 19/08/2023 (Saturday)

Galle - Airport (CMB)

- After the breakfast proceed to Colombo and City tour of Colombo.
- Thereafter proceed to the airport in time for your departure flight.



Tour Includes

- Accommodation on star class hotels on twin sharing, Half board basis.

Destination	Hotel	Number of Nights	Meal
Negombo	Jetwing Blue	01	Breakfast & Dinner
Dambulla	Amaya Lake	02	Breakfast & Dinner
Kandy	Amaya Hills	01	Breakfast & Dinner
Nuwara-Eliya	Araliya Green Hills	01	Breakfast & Dinner
Ella	98 Acres	01	Breakfast & Dinner
Yala	Jetwing Yala	01	Breakfast & Dinner
Galle	Araliya Unawatuna	01	Breakfast & Dinner

*Alternate hotels with similar standard will be used in case, if the above hotels are not available at the time of the booking.

- Private transportation with Air Condition vehicle.
- English speaking Shaffer guide.
- Airport pick-up and drop-off.
- All the Entrance fees.
- Government Taxes, Parking Fees.
- Complimentary 500 ML Mineral water bottle per person per day.

Tour Excludes

- International Flight Tickets.
- Visa fee to Sri Lanka.
- Lunches and Alcoholic/ Nonalcoholic beverages.
- Temple donations & charity.
- Guide tips.
- Early check in & late check out.
- Any other Activities or Excursions not mention in the itinerary.
- The Entrance fees and the other expenses of the optional tours mention in the itinerary.
- Remittance charges.

NaproHolidays (Pvt) Ltd

CONTACT US



Napro
Holidays
(Pvt) Ltd.

SRI LANKA

Phone : (+94) 77 906 5995

Chaminda Fonseka

Email : info@naproholidays.com

Phone : (+94) 71 119 6110

Nilushi Sripala

Email : info@napronet.biz

Germany

Phone : (+49) 017 336 6397

Franzizka Kuprat

Email : info@pokugiardini.de

Italy

Phone: (+39) 329 812 5569

Salvatore Pomilio

Email: info@pokugiardini.it



www.naproholidays.com

NaproHolidays (Pvt) Ltd